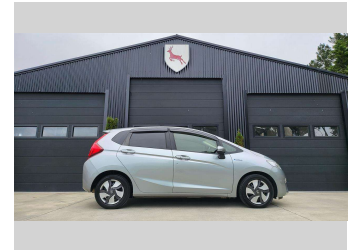
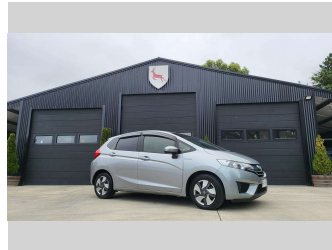
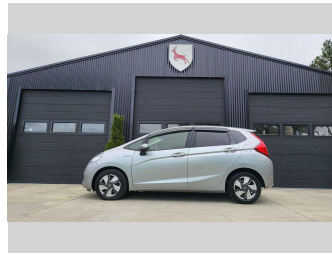
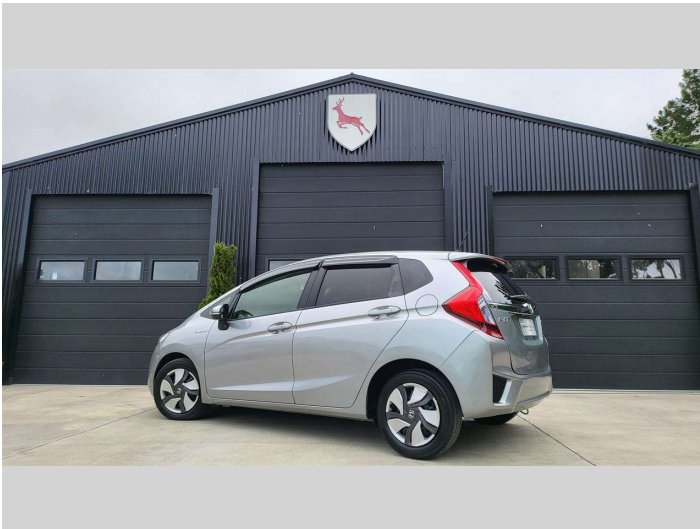



# 2014 Honda Fit HYBRID F PACKAGE DRIVE AWAY




**Purchase Price** **\$12,990**  
Includes GST, Registration & Licensing

Finance may be available on this vehicle. Ask one of our friendly staff for more information.



Gain peace of mind with Mechanical Breakdown Insurance. **Ask us how.**



**Top features**  
None Listed

Body Style  
**5 door, Hatchback**

Odometer  
**82,805 km**

Engine  
**1500 cc, Hybrid**

Fuel Type  
**Petrol**

Transmission  
**Auto, Front Wheel**

Wheels  
**15", FACTORY STEEL**

VIN  
**7AT08G2YX25113432**

Interior  
**Black, Part Leather**

Safety  
  
Based on 2024 UCSR rating for 14-20 models

Reg No.  
-

Ext Colour  
**Gunmetal**

History  
-

Seats  
**5 seats, Cloth**

CO2 Emissions  
**★★★★☆**  
**92 grams/km**

Energy Economy  
**★★★★☆**  
**Annual fuel cost of \$1,530**  
**3.9L per 100km**

Cost per year is an estimate based on petrol price of \$2.80 per litre and an average distance of 14000 km. Emissions and Energy Economy figures standardised to 3P WLTP.

**Stock ID: 1683**



Red Stag Trading Ltd | Phone 022 6390 689 | Email [mick@redstaglmvd.co.nz](mailto:mick@redstaglmvd.co.nz)  
172 Wither Road, Witherlea, Blenheim 7201, New Zealand  
[redstaglmvd.co.nz](http://redstaglmvd.co.nz)